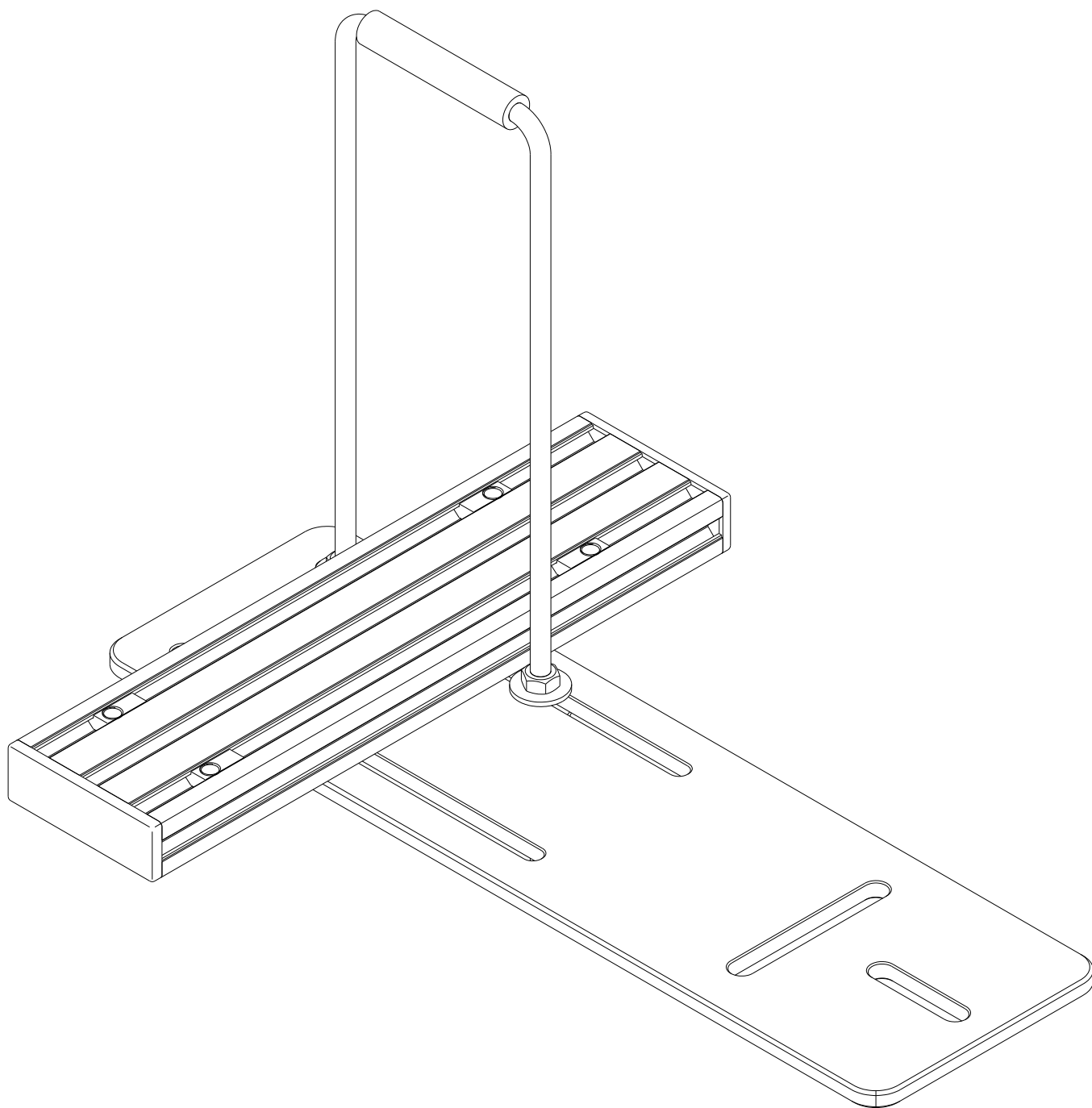


MOUNT FOR GEMINI

User Manual V1.0

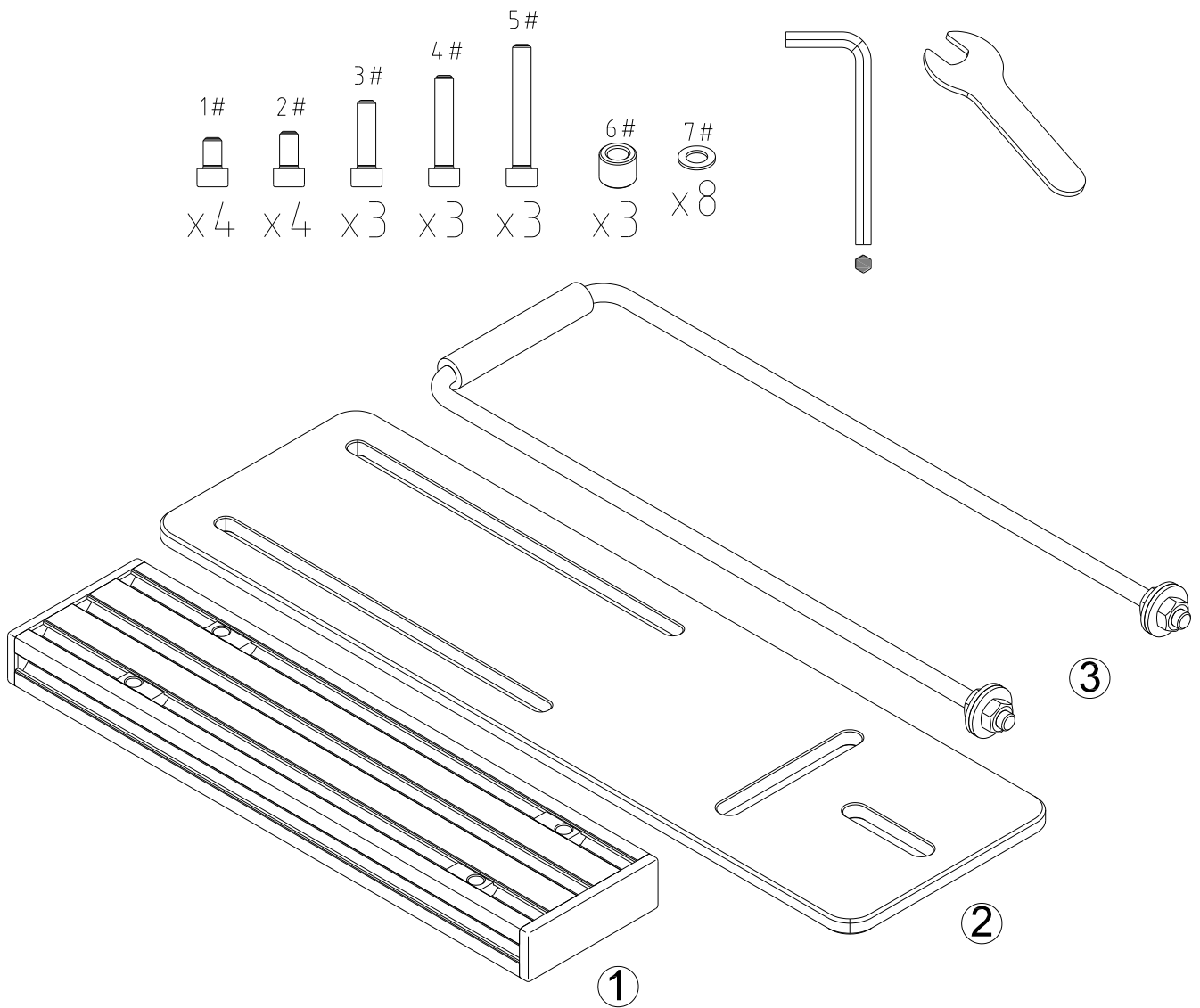


- 1 Check the Gemini Throttle/Collective base manual for connections.
- 2 The “Chair plate Connector” hole pattern will fit most chairs, but not all. You may have to modify it yourself to make it work for you.

Contents :

What’s in the box	1
1 Parameters	2
1.1 Operational parameter	2
1.2 Compatibility	3
1.3 Measurements	3
1.4 Operational measurements	3
2 Assembly.....	4
2.1 Chair plate setup	4
2.2 Chair plate to Base plate connection.....	9
3 Adjustment.....	10
3.1 Base location adjustment	10
3.2 U-shape device adjustment	11

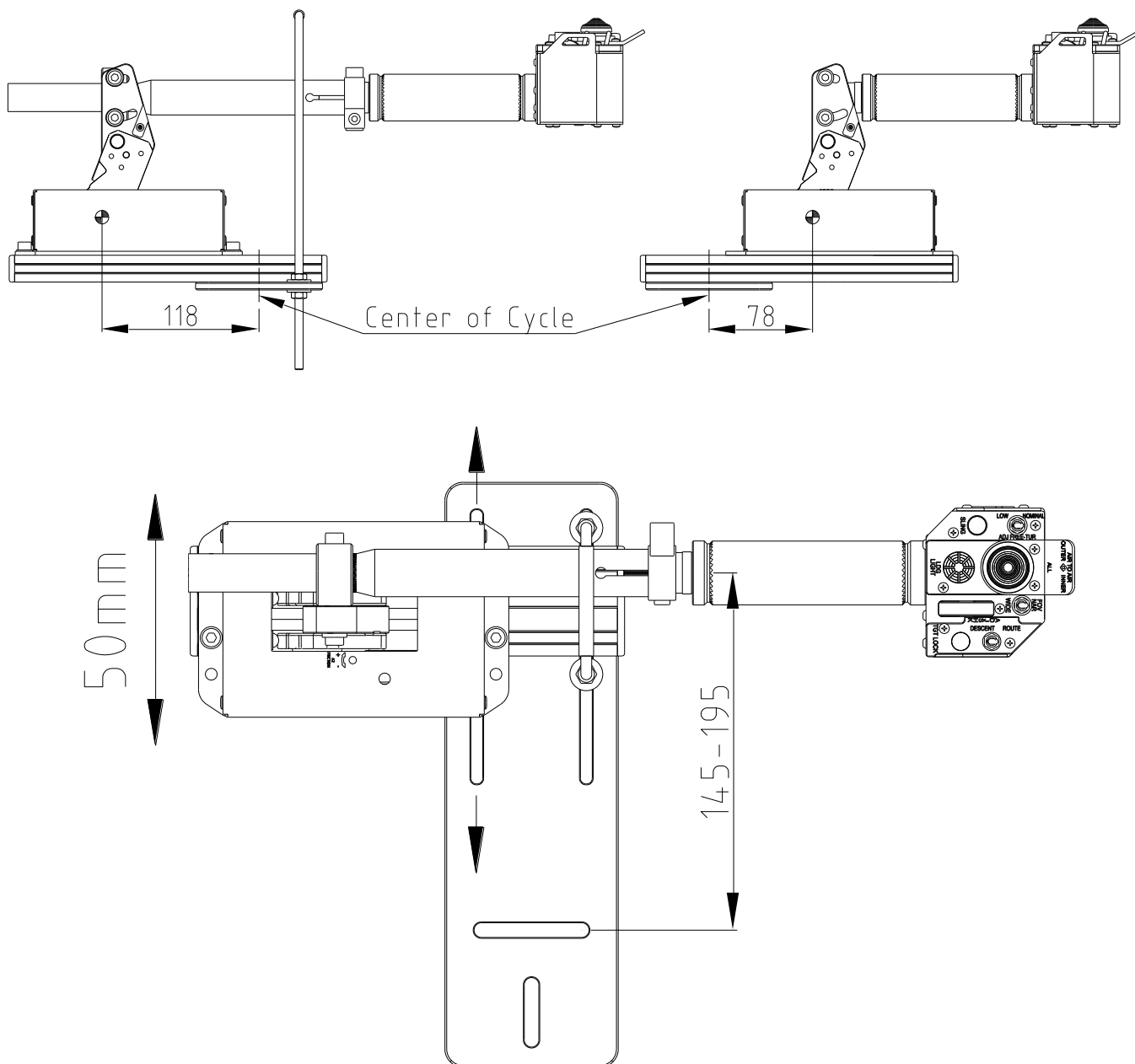
What's in the box



①	Base plate connector	1
②	Chair plate connector	1
③	U-shape limiting device	1
④	Parts	1
⑤	Tool box	1
⑥	Instructions	1

1 Parameters

1.1 Operational parameter



- 1 Vertical adjustment range 196mm;
- 2 Horizontal adjustment range 50mm;
- 3 With U shape limit device, KA50 grip vertical travel can be limited any range within 230mm.

1.2 Compatibility

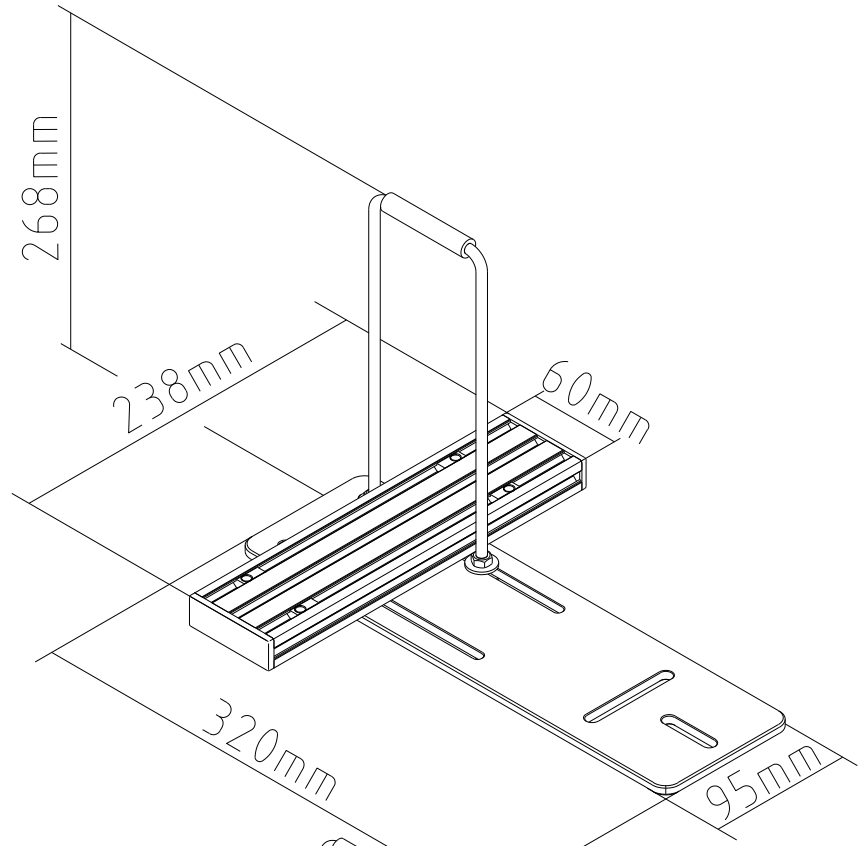
Gemini Throttle/Collective Base.

2.3 Measurements

Product external geometry :

238mm*320mm*268mm ;

Mass=1.1kg=2.5lb.



1.4 Operational measurements

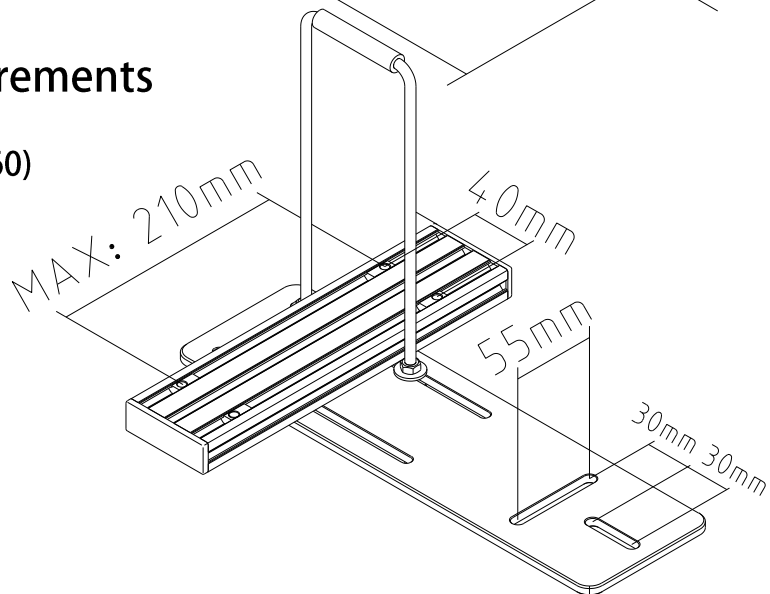
Base-plate connector (Spec 2060)

External install measurement

(30~210) mm*40mm ;

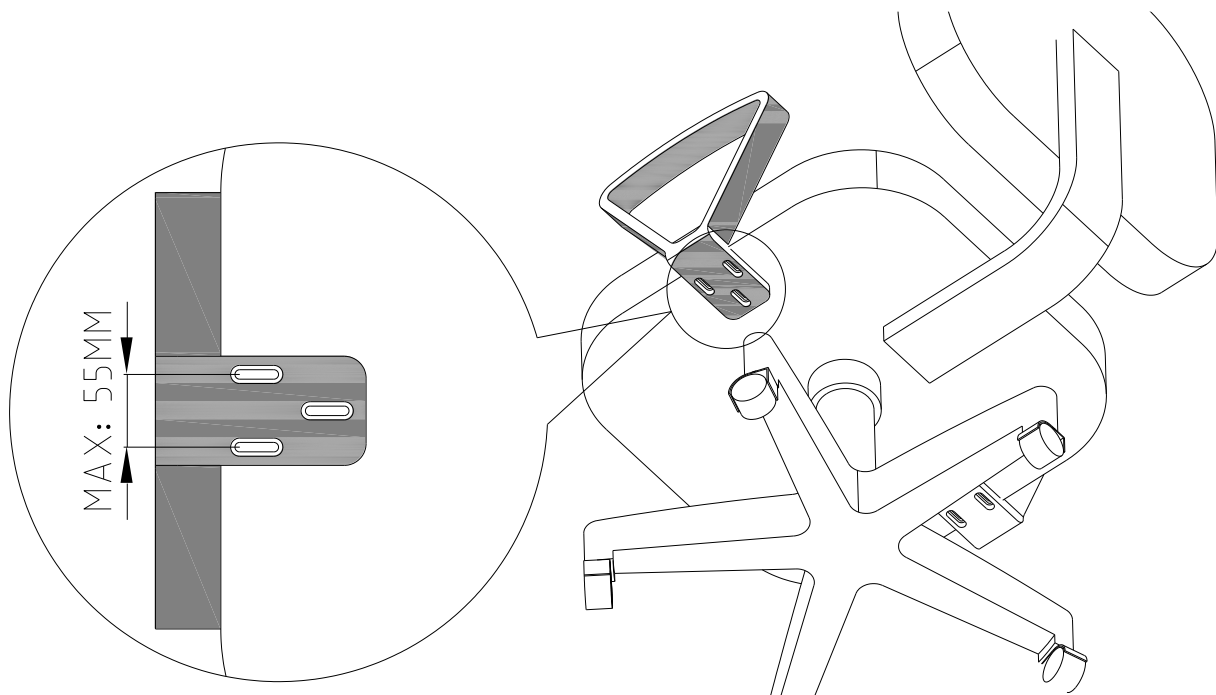
Chair-plate connector

(0~55) mm* (30~60) mm.



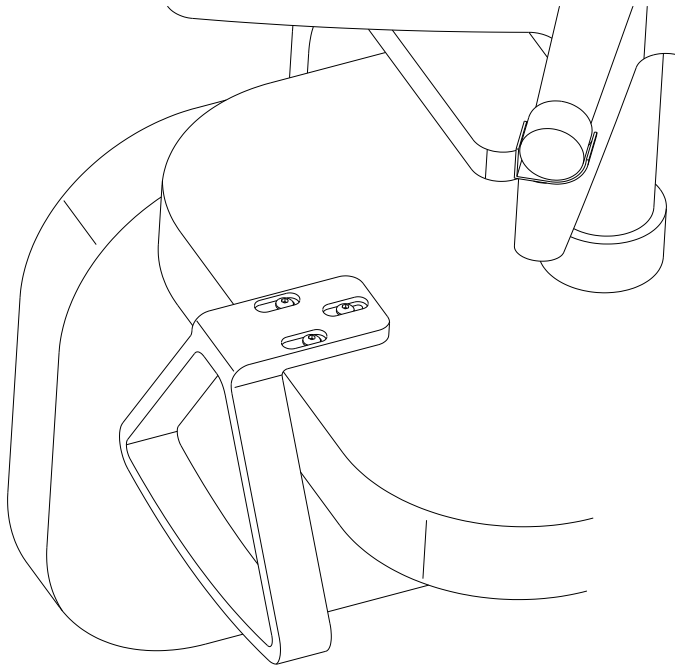
2 Assembly

2.1 Chair plate setup

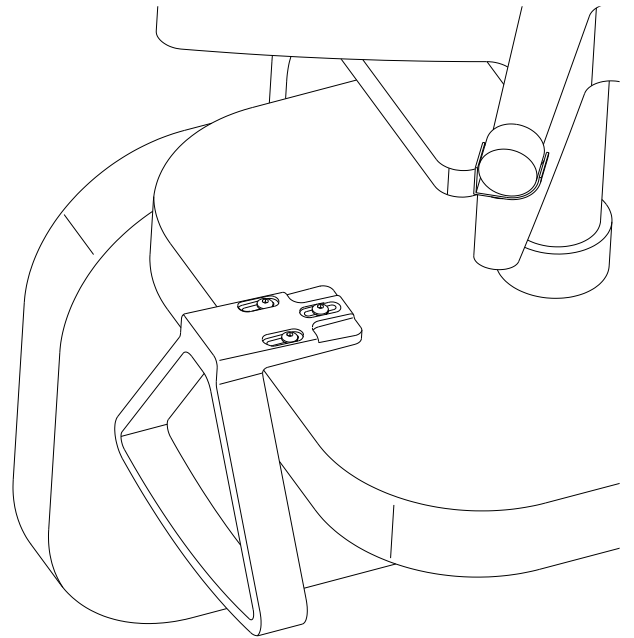


- 1 Verify Arm screw locations are less than 55mm apart;(Cannot complete assembly if the separation is greater than 55mm)
- 2 verify the M6 screw will be used for assembly;
- 3 Following the next chart for assembly;

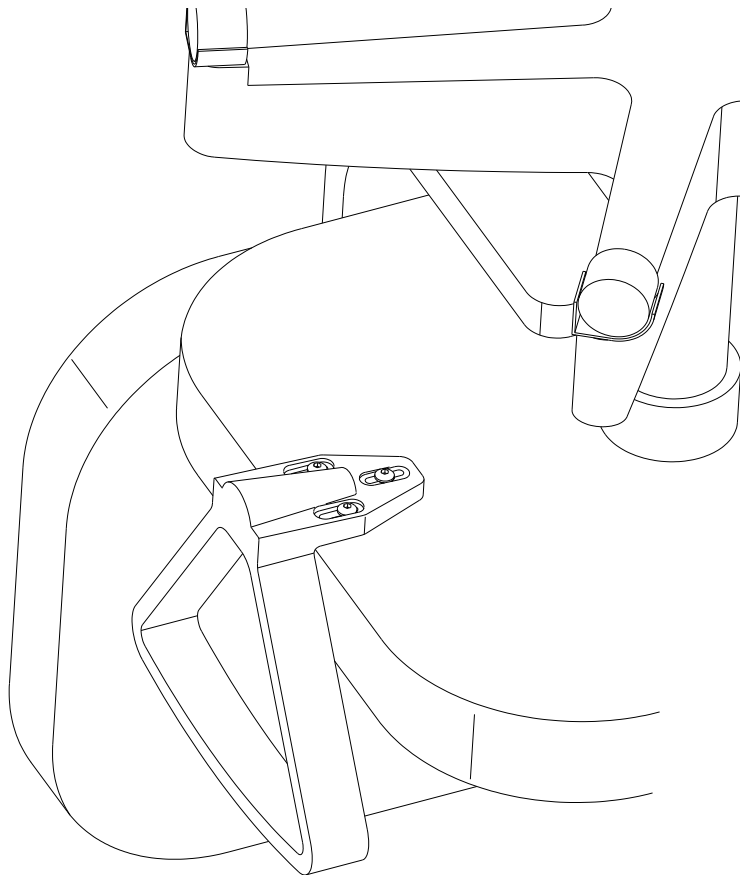
Base plate	Picture	Guideline
Flat	4.1-A	4
Less than 10mm Protruding	4.1-B	5
greater than 10mm Protruding	4.1-C	6



4.1-A

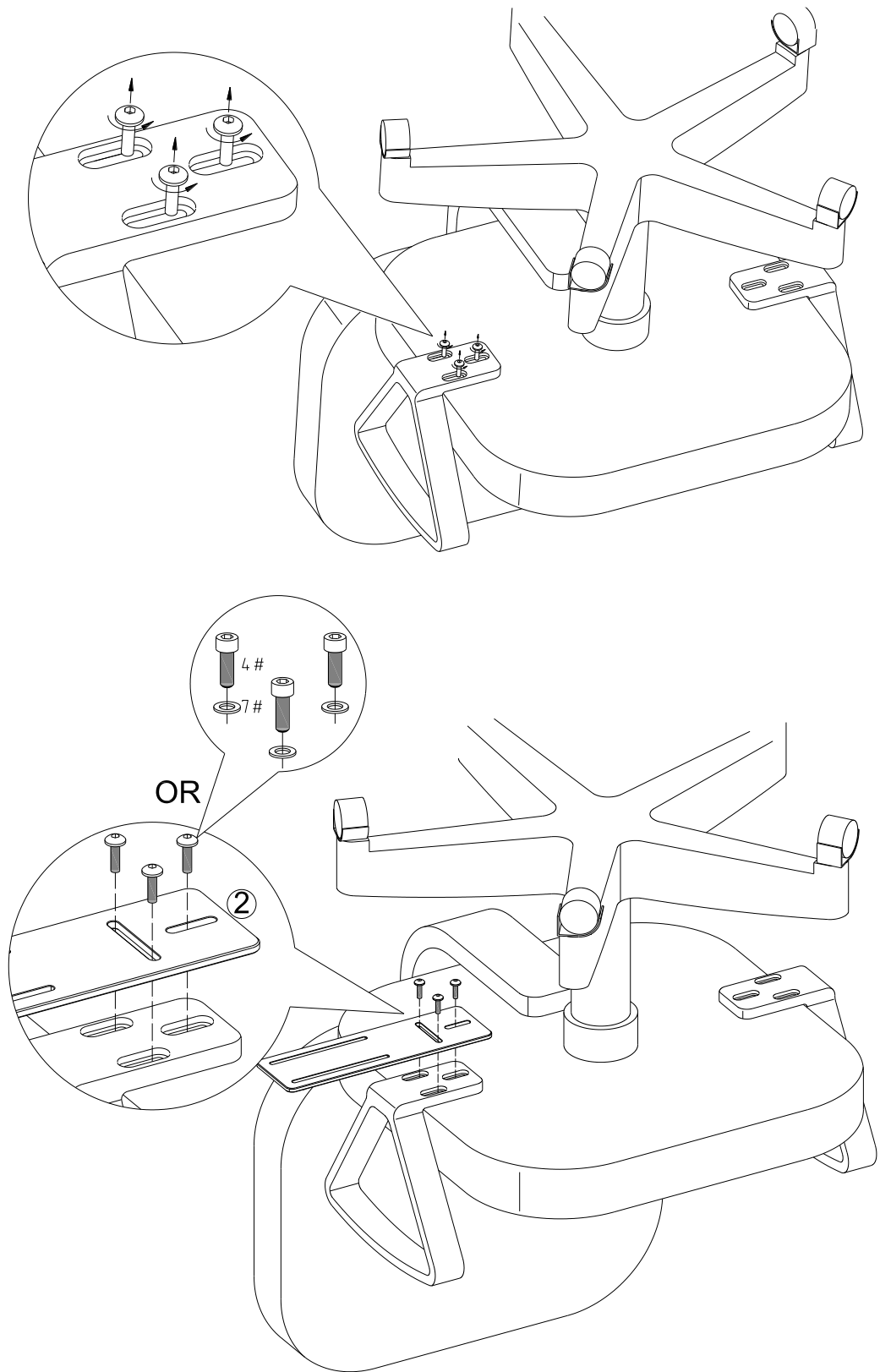


4.1-B



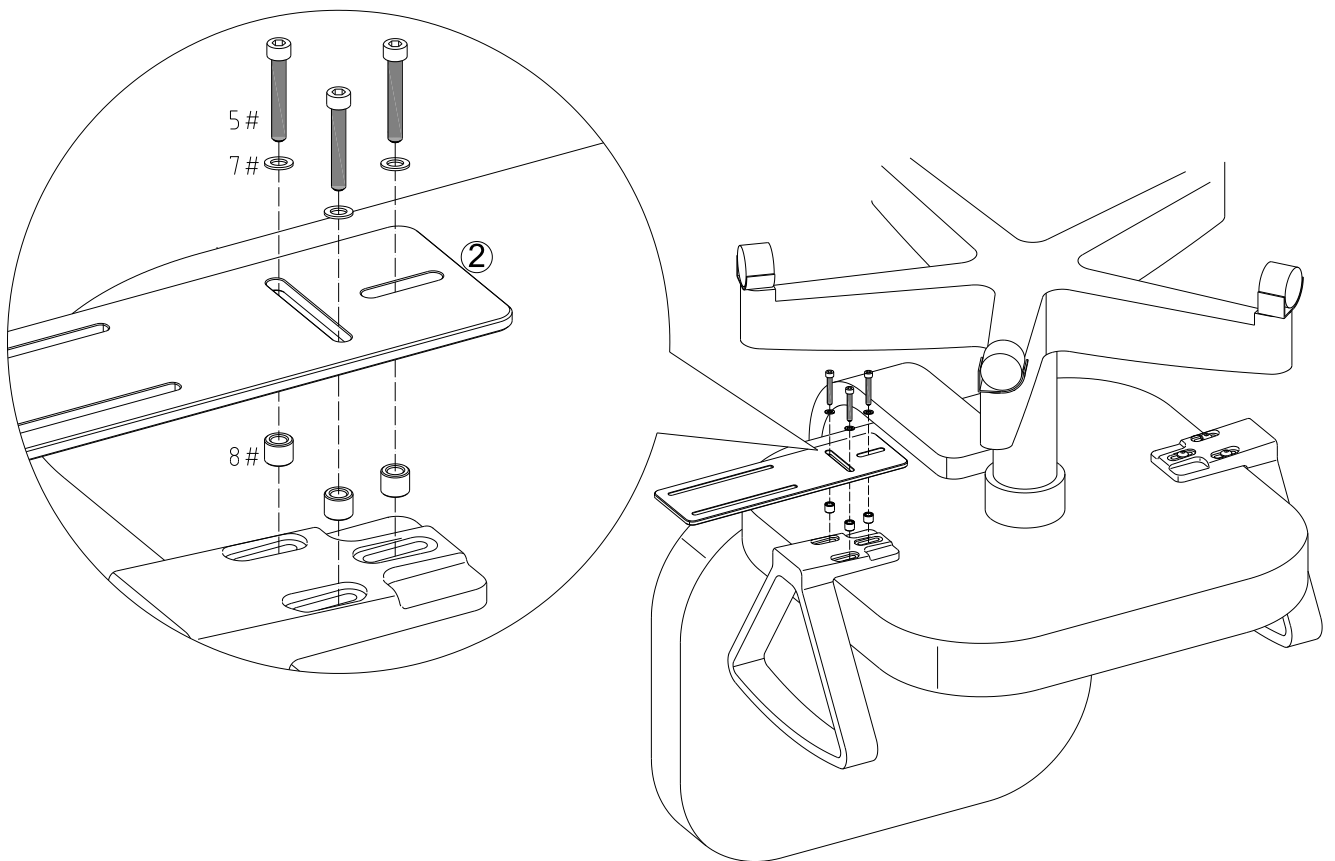
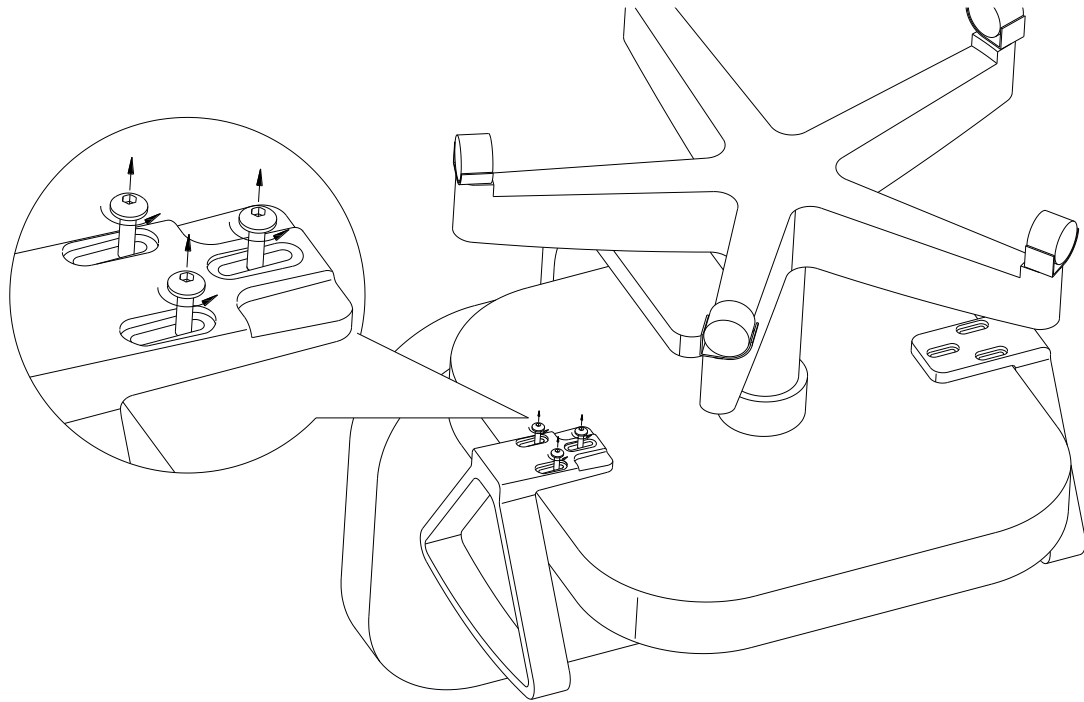
4.1-C

4 With arms



- ① Remove the arm screws;
- ② Using the old screws if they' re long enough, or #4 screws provided, secure the Chair-plate connector.

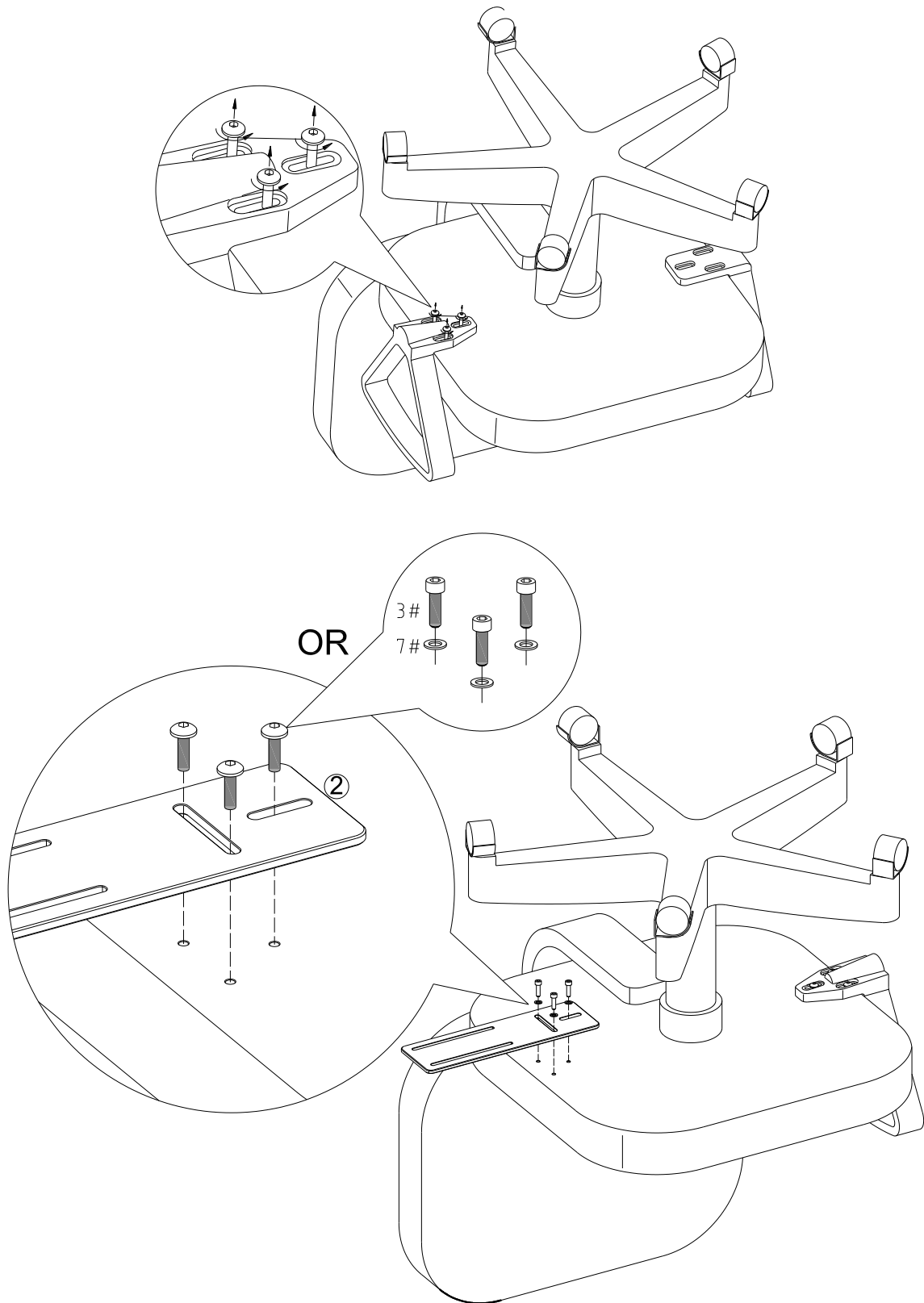
5 With arm + Spacers if needed



① Remove the arm screws;

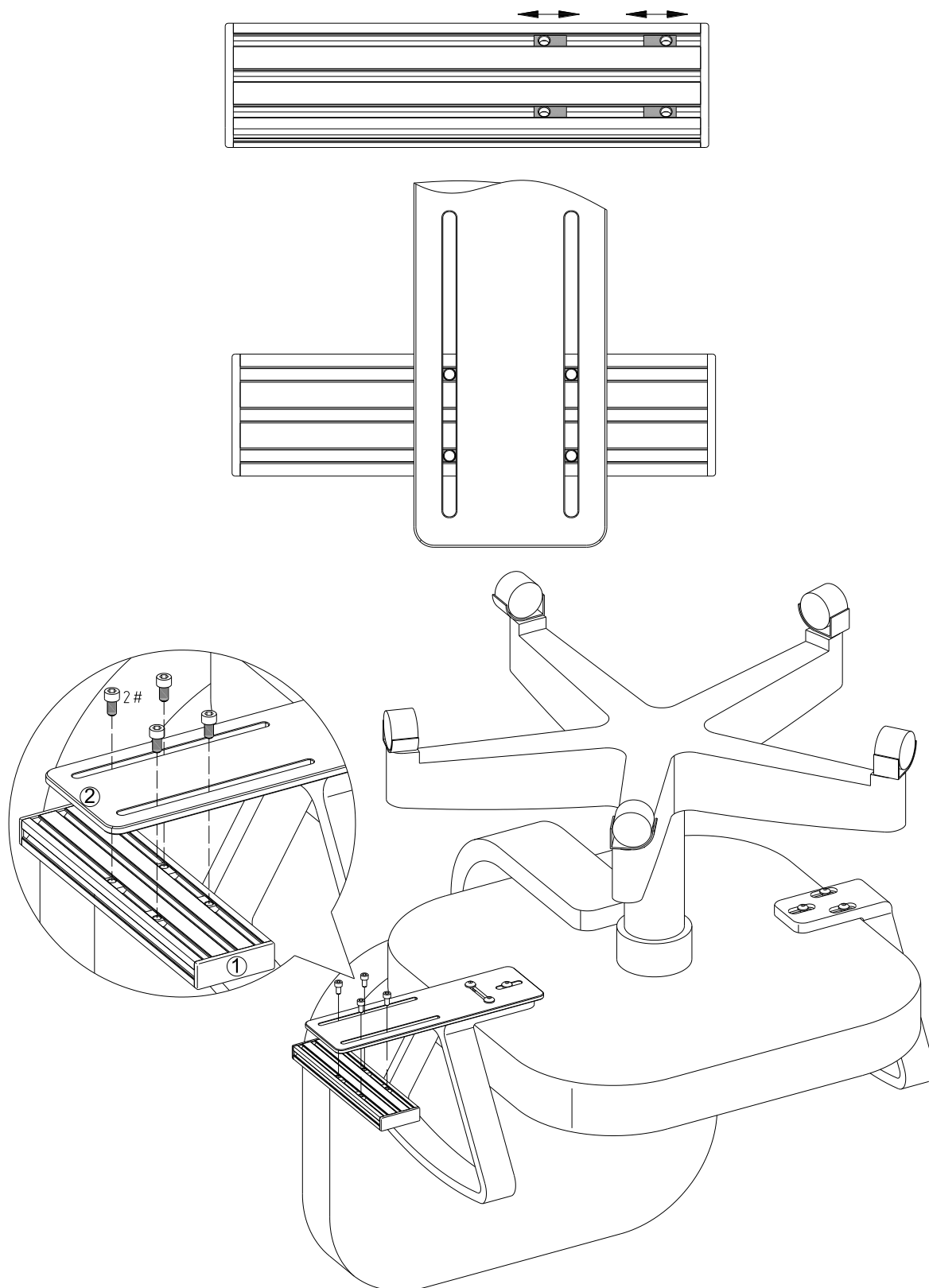
② Use 5# screws + 7# Chair-plate + 8# spacer connectors as shown above.

6 No arms



- ① Remove the arm screws;
- ② Using screws from last step or 3# screws + 7#Chair-plate, secure the Chair-plate to chair as shown above.

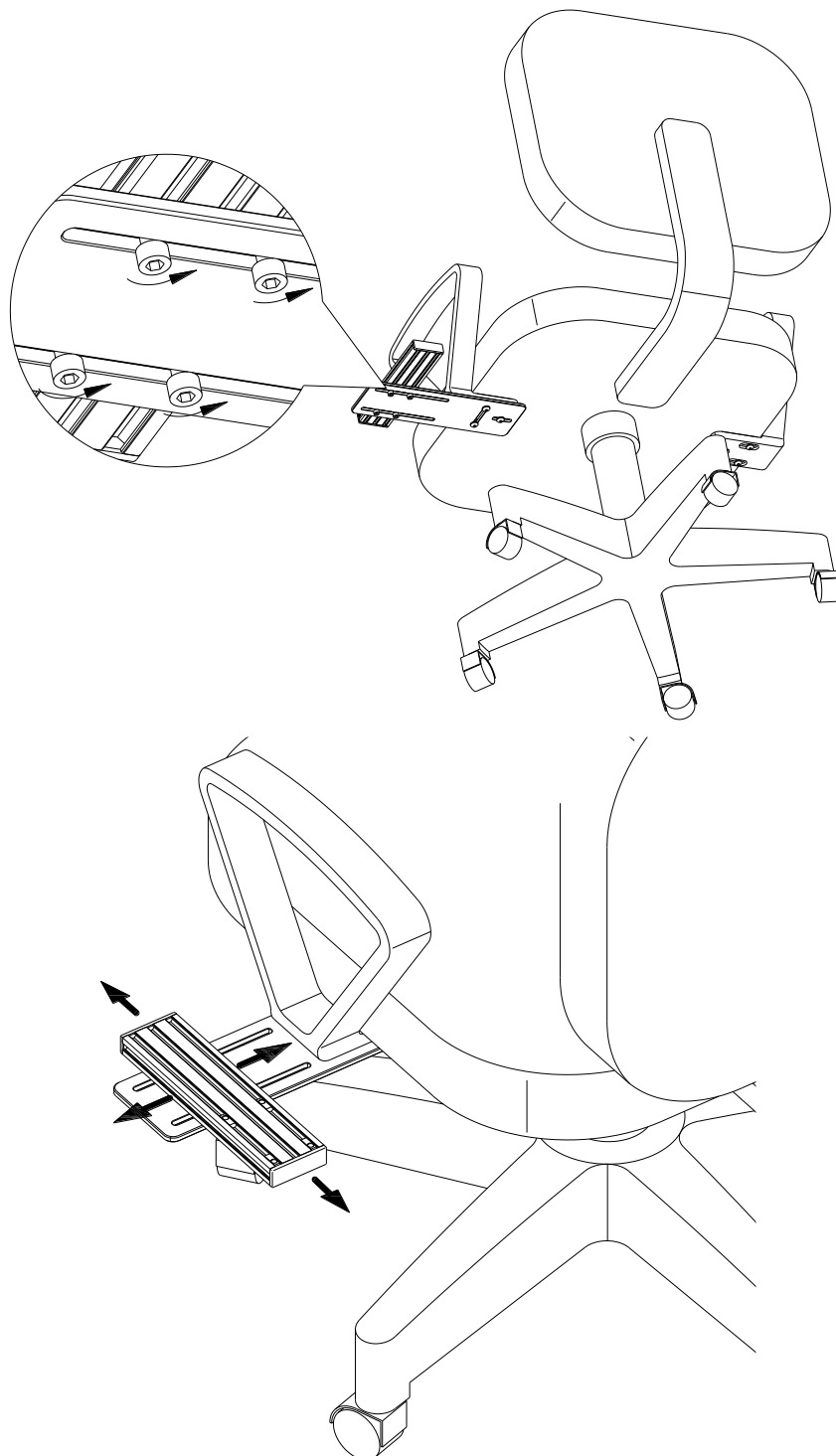
2.2 Chair-plate to Base-plate connection



- ① Align both plates to a matched position;
- ② Use #2 screws to secure the Base-plate to the Chair-plate.

3 Adjustment

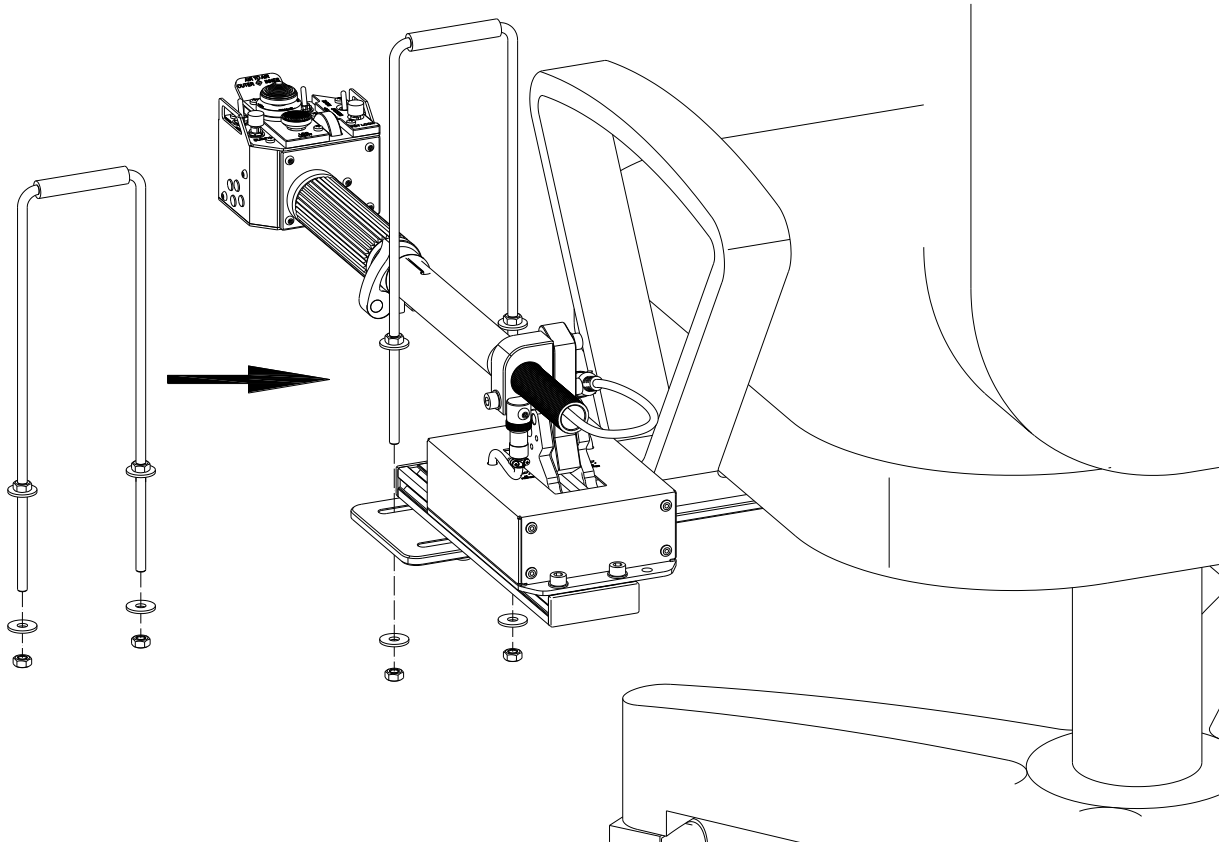
3.1 Position adjustment for chair mount



- ① Support 4 directions of adjustment.
- ② Loosen the 4 plate-connector screws slightly. Place the Gemini Base on the Base-plate and finger tighten the screws, Move the Base-plate and Gemini base to a comfortable position and retighten all screws.

3.2 Adjustment for U shape travel limiter

If your comfortable-position places the Gemini base at the far aft-position of the Base-plate, it is recommended to add the “U shape travel limiter” to restrict the excessive twisting force that could damage your collective or your chair.



Assemble and adjust as shown

*This is the final version of the manual,all update will be made online

成都翼胜科技有限责任公司

WWW.WINWING.CN

INFO@WINWING.CN

High-tech International Enterprise Zone No.19 Building,Changshengqiao Road

1111#, Pidu District, Chengdu,China 610000